

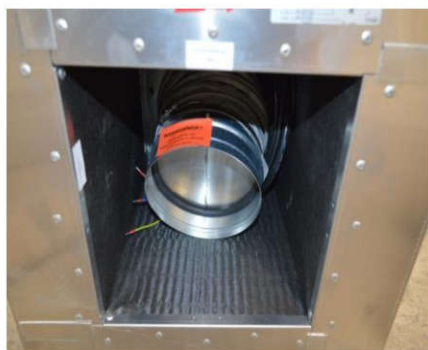
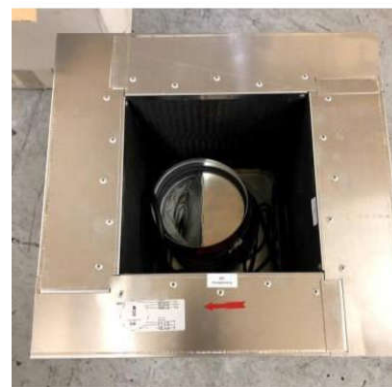
elica

MOTOR FOR FLAT ROOF - KIT0147881



Airflow 1200 m³/h
Connection voltage 220-240 V
Frequency 50 Hz
Total consumption 179 W

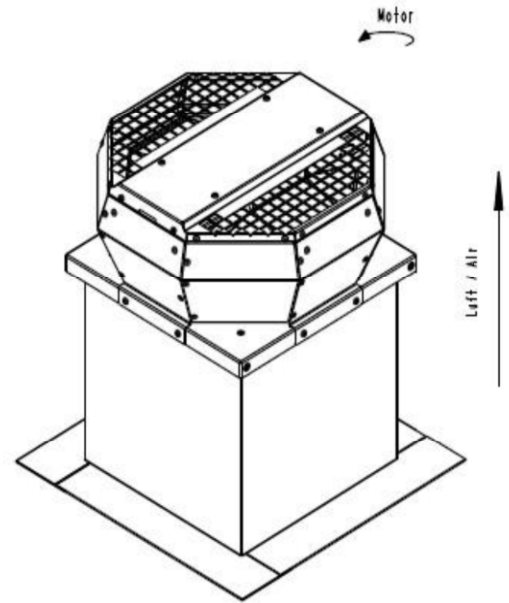
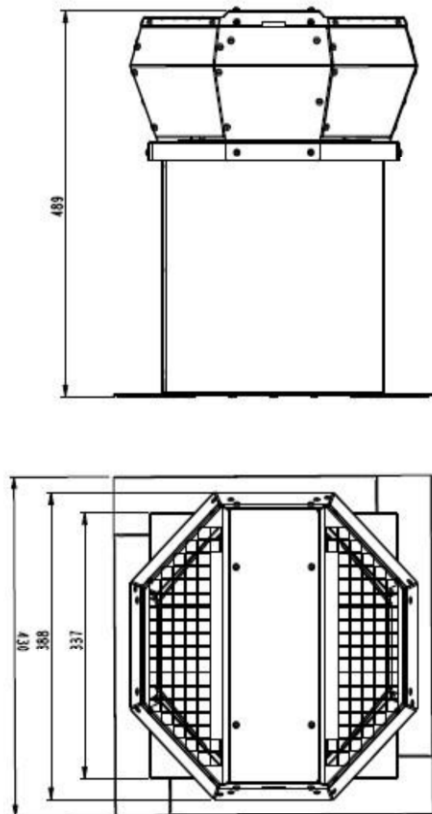
- 1.5 m power cable included
- Telescopic tube D 150 - max 80cm included
- Check valve included




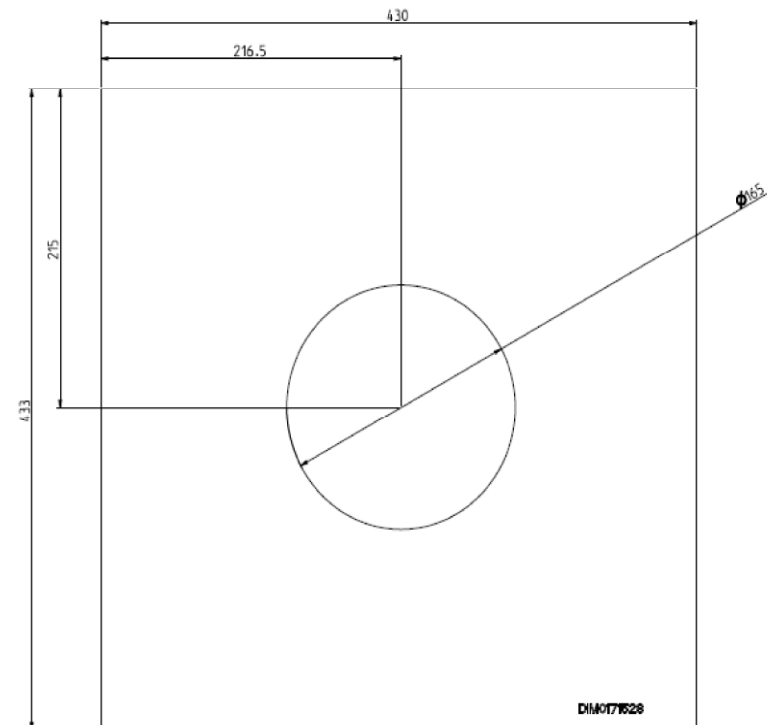
elica

MOTOR FOR FLAT ROOF - KIT0147881

TECHNICAL DRAWING AND JIG



	1:6	A4	mm
Protection Mark according to ISO 10016	General tolerances DIN ISO 2768-mS	YEL I - DVA250EC30	
Created a.g.mos	05.06.2018		
Drawn a.g.mos	05.06.2018		
Released a.g.mos	05.06.2018	146546	00
Disabled			



elica

MOTOR FOR FLAT ROOF - KIT0147881

INSTALLATION

1. Engine positioning:

- The KIT0147881 motor is designed for installation on flat roofs.

2. Engine installation:

- The supporting surface of the motor must be horizontal and level.
- Observe the permissible roof load.
- Once the Ø 150-160 mm hole has been drilled, mount the motor in tiles on the roof: the installer must check on site, depending on roof conditions, whether an additional structure is required to stabilise the motor (screws are not recommended as the stainless steel motor base is very thick and difficult to drill, and they are also risky to use due to the possibility of creating holes in the sheathing under the roof).

2. Electrical connection. (see dedicated section)

3. Connection between hood and remote motor. (see dedicated section)